



HUNGARY

The Hungarian grain market



Introducing ADM

Archer Daniels Midland Company (NYSE:
ADM)

- 31.000 employees
- more than 270 processing plants
- more than 470 sourcing facilities
- in more than 140 countries on six continent
- net sales for the fiscal year 2013 were \$90 billion

Introducing ADM



- Oilseeds processing
- Corn processing
- Agricultural services
- Other services e.g. financial services, insurance etc.

Introducing ADM



- **ADM's Global Daily Processing Capacity**

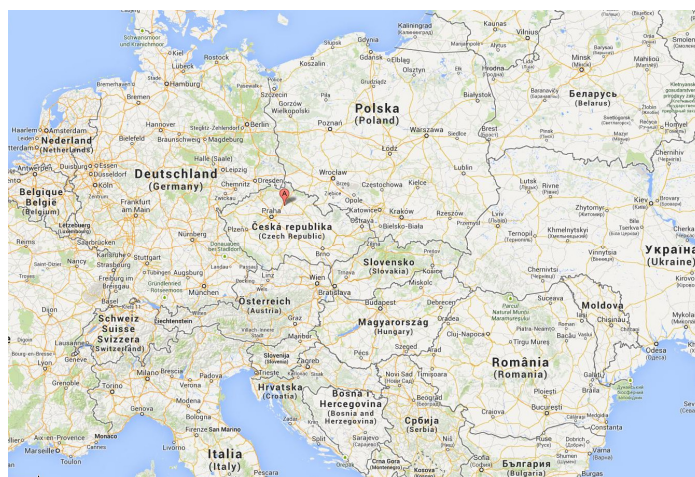
- *Source: 2013 ADM 10-K*

• <i>*Owned or leased</i>	<i>Number*</i>	<i>Metric Tons</i>
• Oilseed Processing	151	164,000
• Corn Processing	17	74,000
• Agricultural Services Processing	104	37,000
• Total	272	275,000

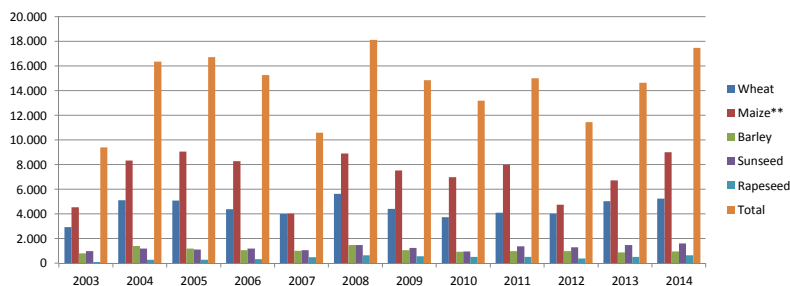
ADM Hungary Agro Trading LLC



- Early 2014 ADM acquires Alfred C. Toepfer International GmbH
- European headquarter moves to Rolle, Switzerland
- Regional Toepfer offices are taken over
- Toepfer Hungary LLC changes its name to ADM Hungary Agro Trading LLC as from 1st August, 2014



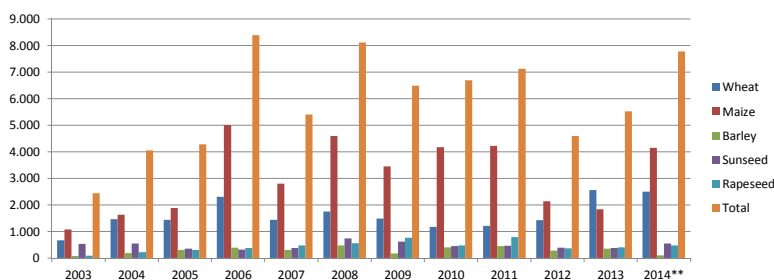
Production figures



Commodity	Crop Year											
	2003	2004	2005	2006	2007	2008	2009	2010	2011	2012	2013	2014
Wheat	2 941	5 120	5 088	4 376	3 987	5 631	4 419	3 745	4 107	4 011	5 032	5 235
Maize**	4 532	8 332	9 050	8 282	4 027	8 897	7 528	6 985	7 992	4 741	6 725	9 000
Barley	810	1 413	1 190	1 075	1 018	1 467	1 064	944	987	996	875	957
Sunseed	992	1 186	1 108	1 181	1 060	1 468	1 256	970	1 375	1 302	1 470	1 600
Rapeseed	108	291	283	338	496	655	579	531	527	401	524	660
Total	9 383	16 342	16 719	15 252	10 588	18 118	14 846	13 175	14 988	11 451	14 626	17 452

*Figures are in 1.000 mt as per Central Statistical Office; ** official estimate

Export figures



Commodity	Crop Year											
	2003	2004	2005	2006	2007	2008	2009	2010	2011	2012	2013	2014**
Wheat	670	1 460	1 434	2 300	1 435	1 747	1 489	1 177	1 210	1 422	2 558	2 500
Maize	1 072	1 628	1 878	5 000	2 805	4 593	3 446	4 178	4 215	2 132	1 836	4 149
Barley	77	190	310	387	302	480	170	406	451	282	350	100
Sunseed	530	551	348	320	378	737	623	455	460	385	375	550
Rapeseed	87	217	309	376	480	557	759	480	790	370	399	480
Total	2 436	4 046	4 279	8 383	5 400	8 114	6 487	6 696	7 126	4 591	5 518	7 779

*Figures are in 1.000 mt as per Central Statistical Office; ** estimate



THANK YOU